

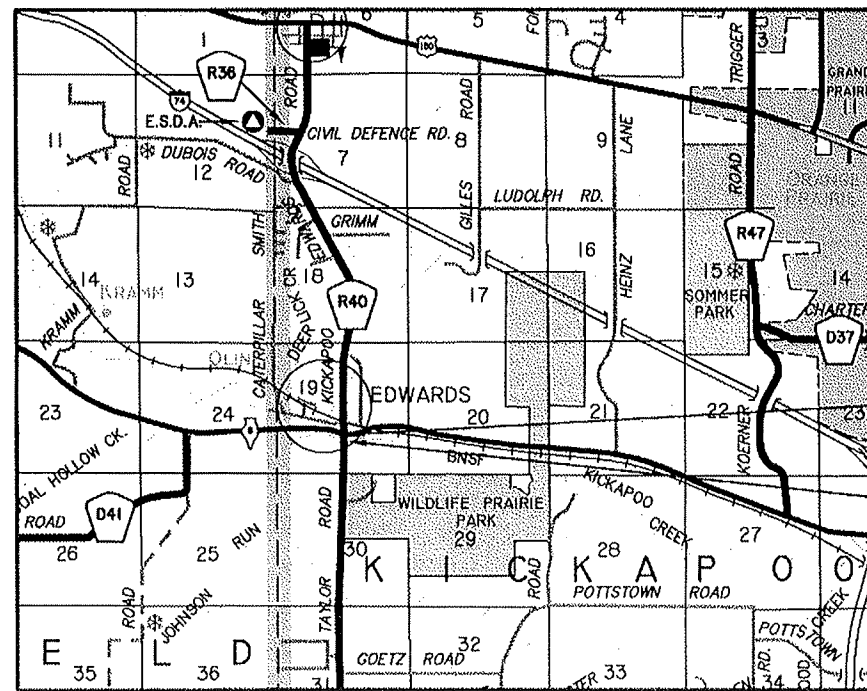
PLANS FOR THE  
 PROPOSED IMPROVEMENT  
 OF  
 SECTION 2015-6-CB COUNTY HIGHWAY R40  
 PEORIA COUNTY, ILLINOIS

INDEX OF SHEETS

- 1 COVER SHEET
- 2 SUMMARY OF QUANTITIES
- 3-5 CONSTRUCTION DETAIL SHEETS

LIST OF STANDARDS

- 701011-04 OFF ROAD MOVING OPERATIONS, 2L, 2W, DAY ONLY
- 701201-04 LANE CLOSURE, 2L, 2W, DAY ONLY,  
FOR SPEED  $\geq$  45 MPH
- 701301-04 LANE CLOSURE, 2L, 2W, SHORT TIME OPERATIONS
- 701901-05 TRAFFIC CONTROL DEVICES

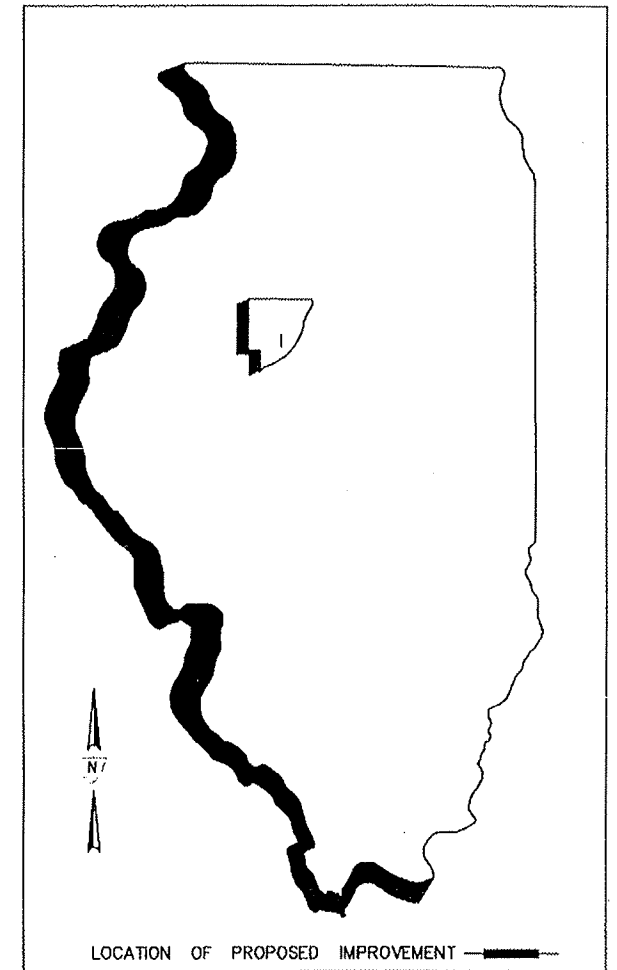


KICKAPOO TOWNSHIP  
 T9N R7E 4 P.M.

LOCATION MAP (NO SCALE)

PROJECT ENDS  
 STA. 193+00.00

PROJECT BEGINS  
 STA. 189+19.50



LOCATION OF PROPOSED IMPROVEMENT

APPROVED May 17 2017  
*Amy Benecke McLaren*  
 PEORIA COUNTY ENGINEER

THESE PLANS WERE PREPARED BY A FULL TIME MEMBER  
 OF MY STAFF UNDER MY PERSONAL SUPERVISION.

*Amy Benecke McLaren*  
 PEORIA COUNTY ENGINEER



EXPIRES 11/30/17



**CONCRETE SLOPE WALL REMOVAL**

STA. 189+48.7 TO STA. 190+61.4      1,542.0 SQ. YD.  
 TOTAL = 1,542.0 SQ. YD.

**CHANNEL EXCAVATION**

LT. 108' @ BRIDGE TO RT. 106' @ BRIDGE      71.0 CU. YD.  
 TOTAL = 71.0 CU. YD.

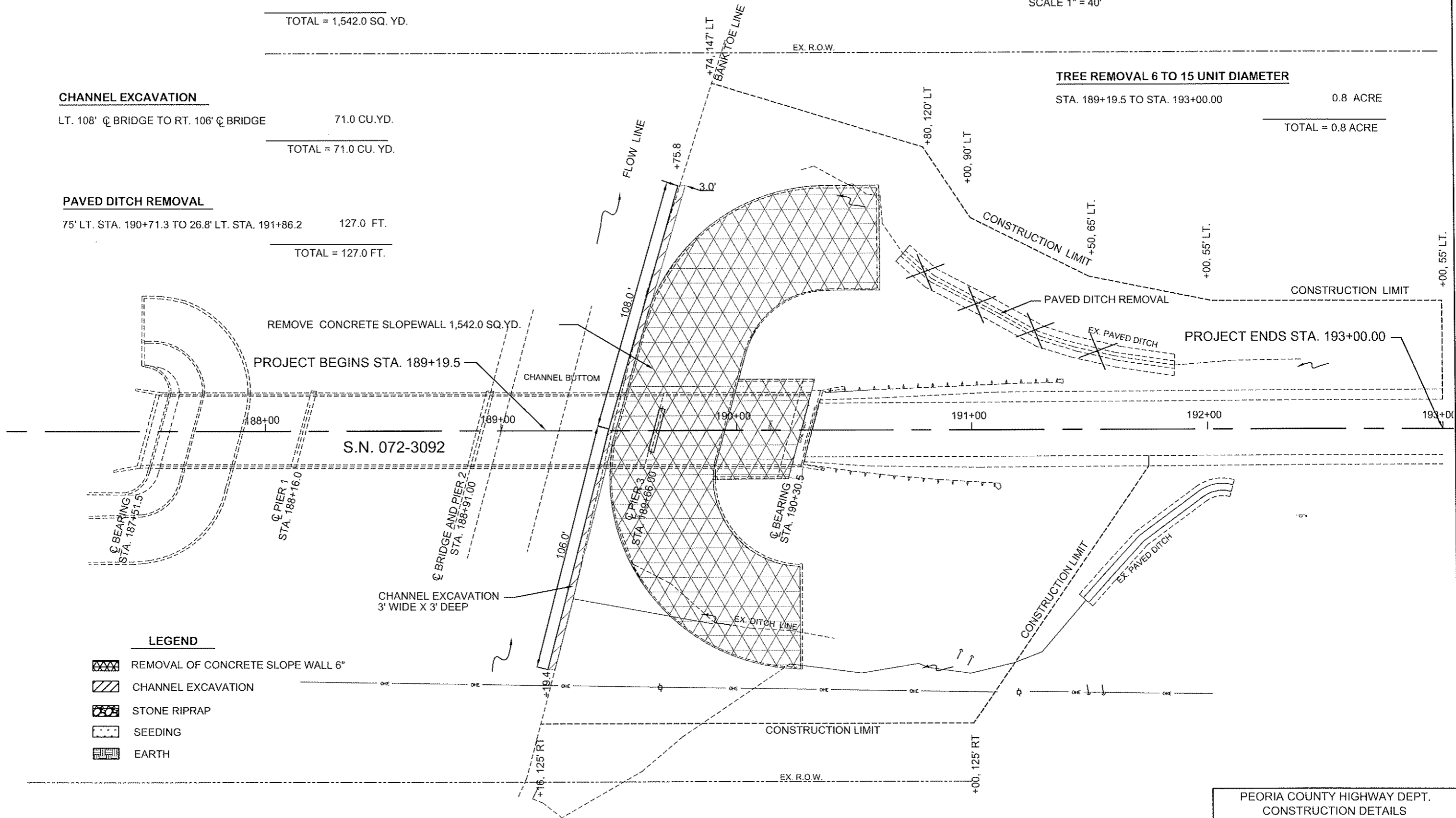
**PAVED DITCH REMOVAL**

75' LT. STA. 190+71.3 TO 26.8' LT. STA. 191+86.2      127.0 FT.  
 TOTAL = 127.0 FT.



**TREE REMOVAL 6 TO 15 UNIT DIAMETER**

STA. 189+19.5 TO STA. 193+00.00      0.8 ACRE  
 TOTAL = 0.8 ACRE



**LEGEND**

- REMOVAL OF CONCRETE SLOPE WALL 6"
- CHANNEL EXCAVATION
- STONE RIPRAP
- SEEDING
- EARTH

PEORIA COUNTY HIGHWAY DEPT.  
 CONSTRUCTION DETAILS  
 TAYLOR ROAD BRIDGE SLOPE REPAIR  
 S.N. 072- 3092

**SEEDING CLASS 3**

LT. STA. 189+19.5 TO STA. 193+00.0      0.4 ACRES  
 RT. STA. 189+19.5 TO STA. 191+75.0      0.4 ACRES  
 NOTE: [Pattern] AREA      TOTAL = 0.8 ACRES

**BENCH MARK**

NEAR STA. 190+30.5, 17.5' LT.  
 CHISELED "SQ" ON SOUTHEAST ABUTMENT  
 ELEVATION = 530.56



**EROSION CONTROL BLANKET**

LT. STA. 189+19.5 TO STA. 193+00.0      1,936 SQ. YD.  
 RT. STA. 189+19.5 TO STA. 191+75.0      1,936 SQ. YD.  
 NOTE: [Pattern] AREA      TOTAL = 3,872 SQ. YD.

**NITROGEN FERTILIZER NUTRIENTS**

LT. & RT. STA. 189+17.0 TO STA. 193+00.0      72.0 LB

**PHOSPHORUS FERTILIZER NUTRIENTS**

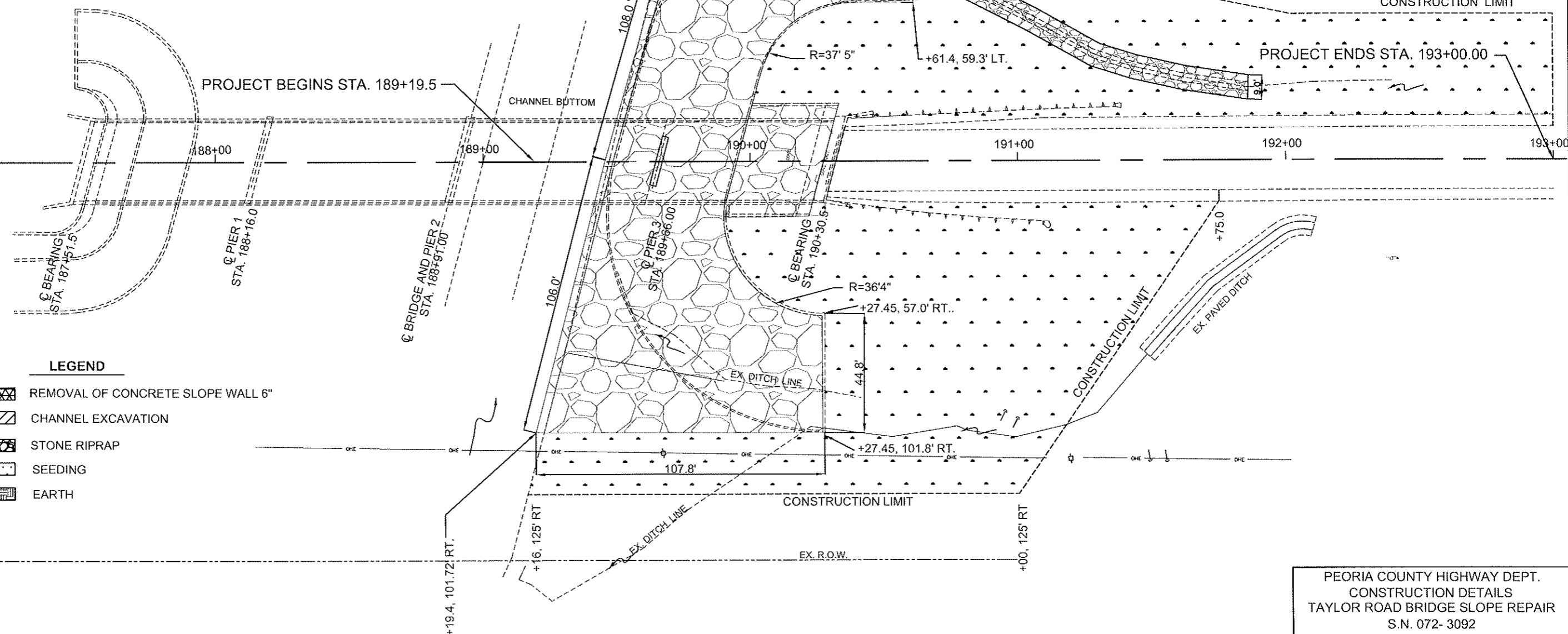
LT. & RT. STA. 189+17.0 TO STA. 193+00.0      72.0 LB

**NITROGEN FERTILIZER NUTRIENTS**

LT. & RT. STA. 189+17.0 TO STA. 193+00.0      72.0 LB

**STONE RIPRAP, CLASS A6**      2,008 SQ. YD.  
**FILTER FABRIC**      2,008 SQ. YD.

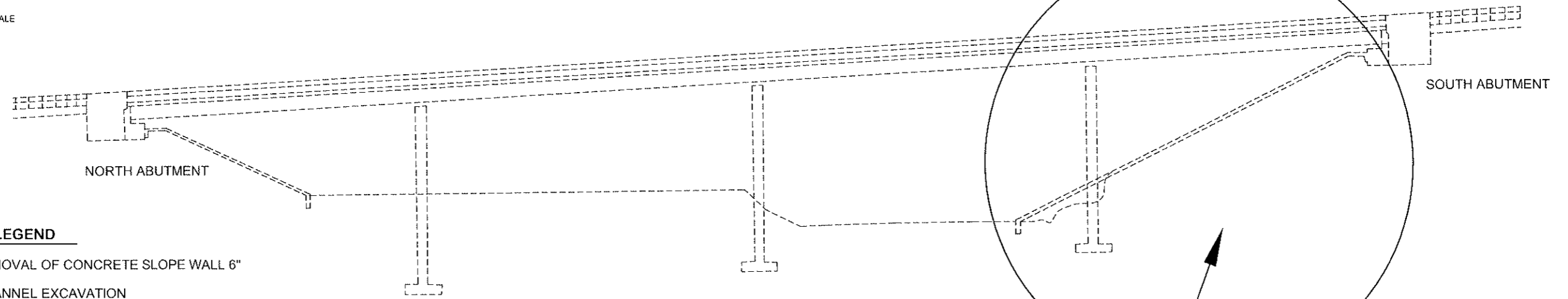
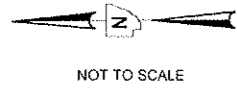
**STONE RIPRAP, CLASS A3**  
 81.6' LT. STA. 190+61.4 TO 26.8' LT. STA. 191+86.2      140 SQ. YD  
 TOTAL = 140 SQ. YD



**LEGEND**

- [Cross-hatch with X] REMOVAL OF CONCRETE SLOPE WALL 6"
- [Diagonal hatching] CHANNEL EXCAVATION
- [Stone riprap pattern] STONE RIPRAP
- [Dotted pattern] SEEDING
- [Cross-hatch] EARTH

PEORIA COUNTY HIGHWAY DEPT.  
 CONSTRUCTION DETAILS  
 TAYLOR ROAD BRIDGE SLOPE REPAIR  
 S.N. 072- 3092



**LEGEND**

- REMOVAL OF CONCRETE SLOPE WALL 6"
- CHANNEL EXCAVATION
- STONE RIPRAP
- SEEDING
- EARTH

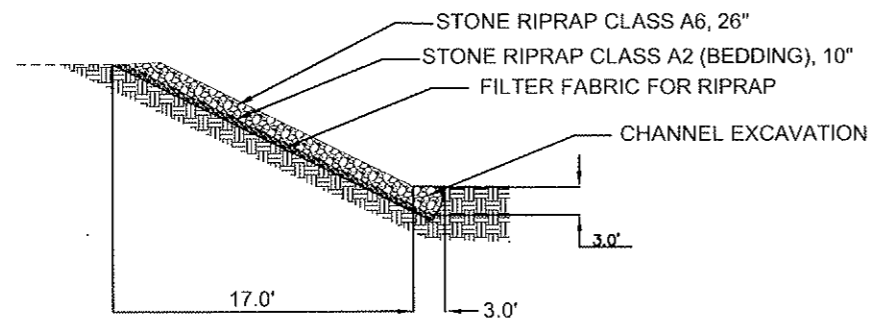
**GENERAL NOTES:**

THE STANDARD SPECIFICATIONS ADOPTED APRIL 1, 2016 BY THE ILLINOIS DEPARTMENT OF TRANSPORTATION SHALL APPLY TO THE WORK OF THIS CONTRACT.

THE WORK INVOLVED IN THIS PROJECT INCLUDES REMOVAL OF THE EXISTING CONCRETE SLOPEWALL, CHANNEL EXCAVATION, AND STONE RIPRAP AT BRIDGE SOUTH ABUTMENT AS SHOWN ON THE PLANS.

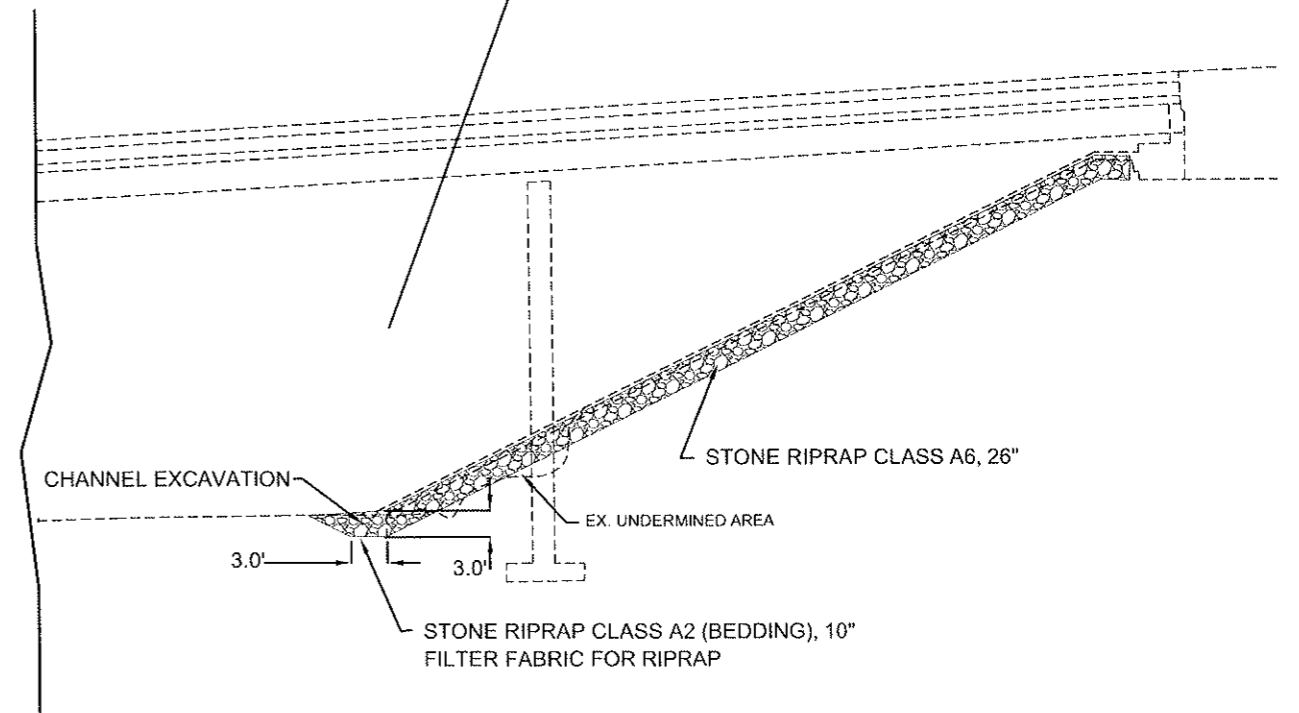
INCLUDED IN THE UNIT COST FOR STONE RIPRAP ARE RESHAPING AND COMPACTION OF EARTH REQUIRED TO BUILD THE ADJACENT BANK OF BRIDGE SLOPEWALL AS DIRECTED BY THE ENGINEER.

ANY ADDITIONAL MATERIALS OR EQUIPMENT REQUIRED TO COMPLETE THE JOB WILL BE CONSIDERED INCLUDED IN THE COST OF STONE RIPRAP CLASS A6.



**TYPICAL BANK SLOPE DETAILS**

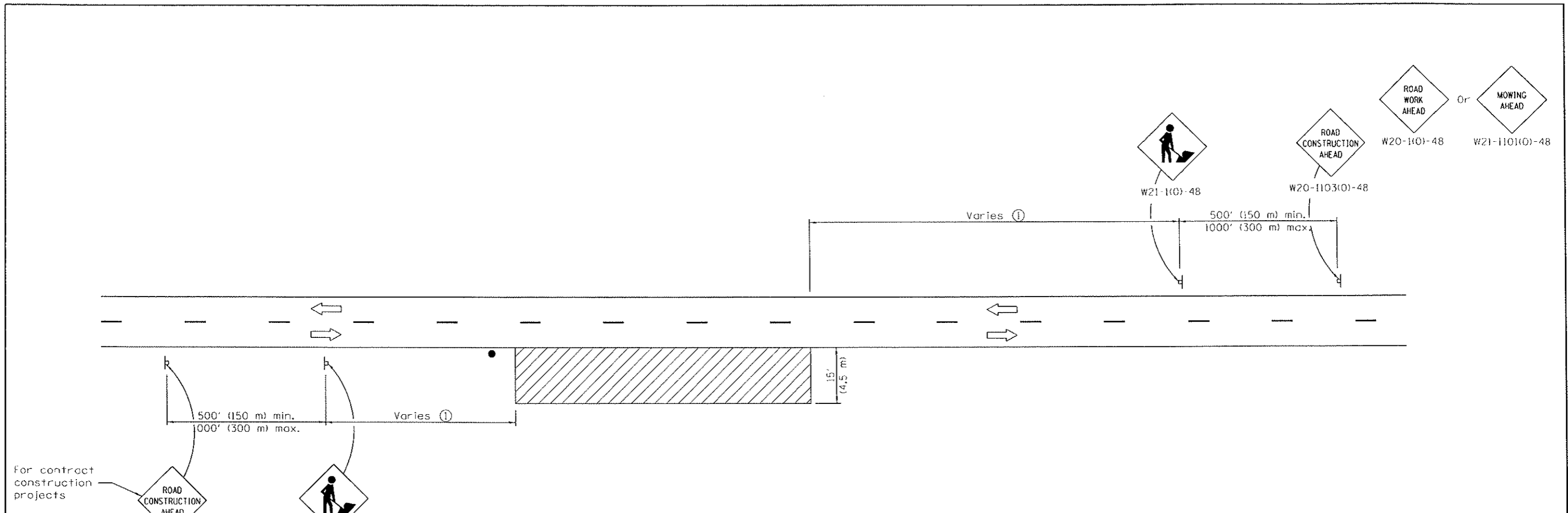
**STONE RIPRAP DETAILS**



**TYPICAL BRIDGE SLOPE WALL - SOUTH ABUTMENT**

**STONE RIPRAP DETAILS**

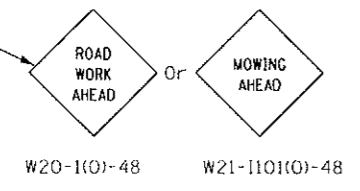
PEORIA COUNTY HIGHWAY DEPT.  
CONSTRUCTION DETAILS  
TAYLOR ROAD BRIDGE SLOPE REPAIR  
S.N. 072- 3092



For contract construction projects



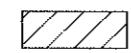
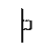

For maintenance and utility projects



**TYPICAL APPLICATIONS**

Shoulder work  
Utility operations

**SYMBOLS**

-  Work area
-  Sign
-  Flagger with traffic control sign when required

① Minimum distance is 200' (60 m). Maximum distance to be determined by the Engineer but should not exceed 1/2 the length required for one normal working day's operation, or 4 miles (6.4 km) whichever is less.

**GENERAL NOTES**

This Standard is used where at any time, any vehicle, equipment, workers or their activities require an intermittent or continuous moving operation on the shoulder, where the average speed is 1 mph (2 km/h) or less.

When the work operation does not exceed 60 minutes, traffic control may be according to Standard 701301.

All dimensions are in inches (millimeters) unless otherwise shown.

Illinois Department of Transportation

APPROVED January 1, 2014  
*Amelia Adams*  
 ENGINEER OF SAFETY ENGINEERING

APPROVED January 1, 2014  
*RE*  
 ENGINEER OF DESIGN AND ENVIRONMENT

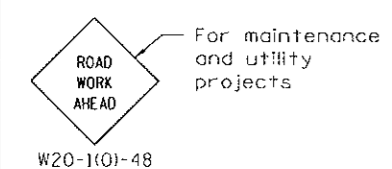
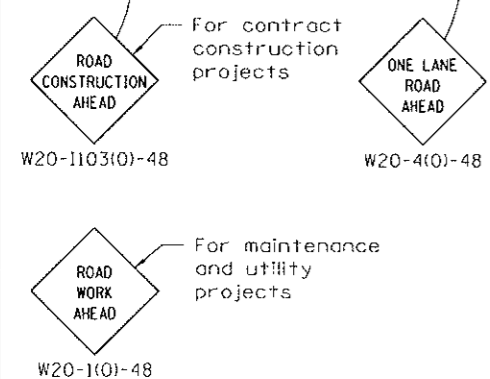
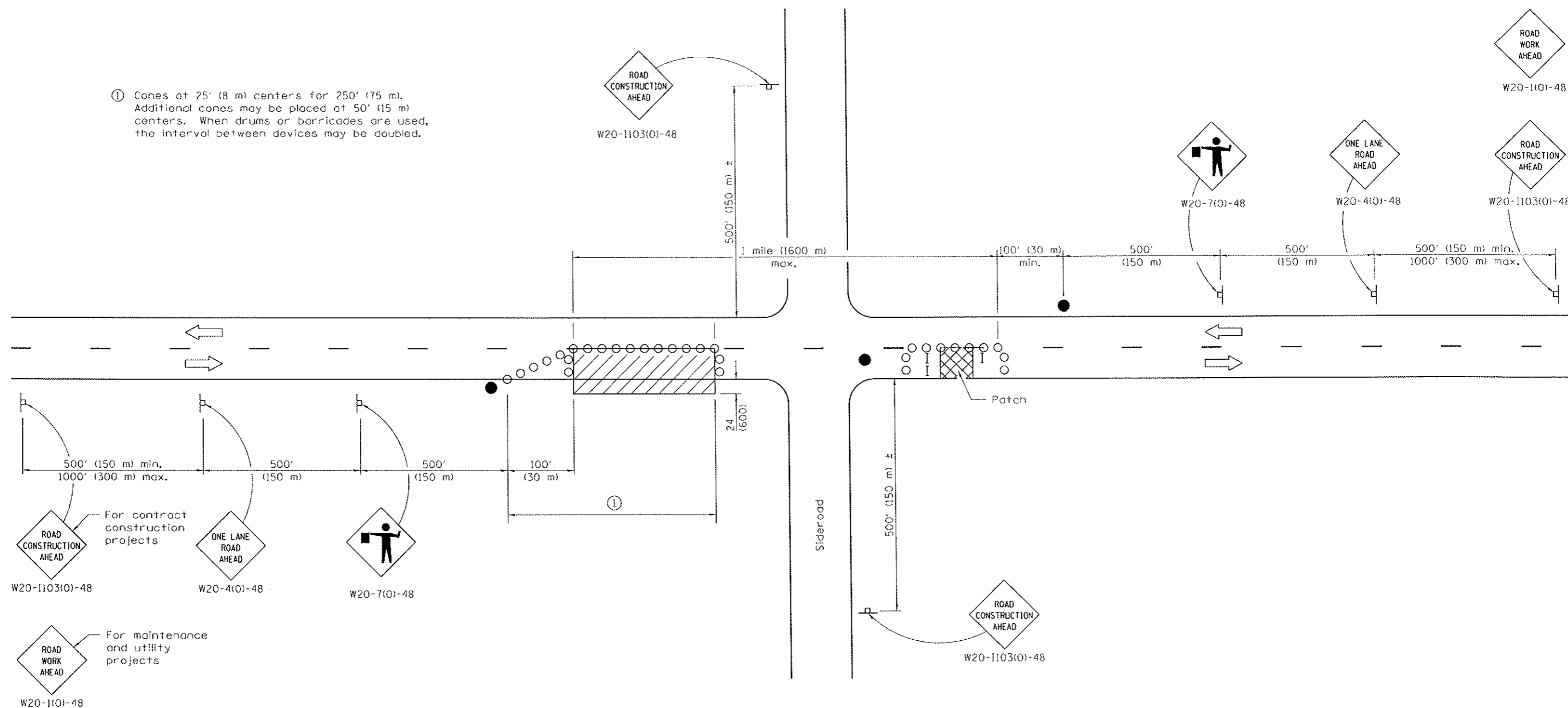
ISSUED 1-1-97

DATE	REVISIONS
1-1-14	Revised worker's sign number to agree with current MUTCD.
1-1-13	Omitted text 'WORKERS' sign.

**OFF-ROAD MOVING OPERATIONS,  
2L, 2W, DAY ONLY**

**STANDARD 701011-04**

① Cones at 25' (8 m) centers for 250' (75 m). Additional cones may be placed at 50' (15 m) centers. When drums or barricades are used, the interval between devices may be doubled.



**TYPICAL APPLICATIONS**

- Isolated patching
- Utility operations
- Storm sewer
- Culverts
- Cable placement

**SYMBOLS**

- Work area
- Sign
- Barricade or drum
- Cone, drum or barricade
- Flagger with traffic control sign

**GENERAL NOTES**

This Standard is used where at any time, any vehicles, equipment, workers or their activities will encroach in the area between the center line and a line 24 (600) outside the edge of pavement for daylight operation.

When the distance between successive work areas exceeds 2000' (600 m), additional warning signs, flaggers, and taper shall be placed as shown.

All dimensions are in inches (millimeters) unless otherwise shown.

Illinois Department of Transportation

APPROVED January 1, 2011  
*James C. [Signature]*  
 ENGINEER OF SAFETY ENGINEERING

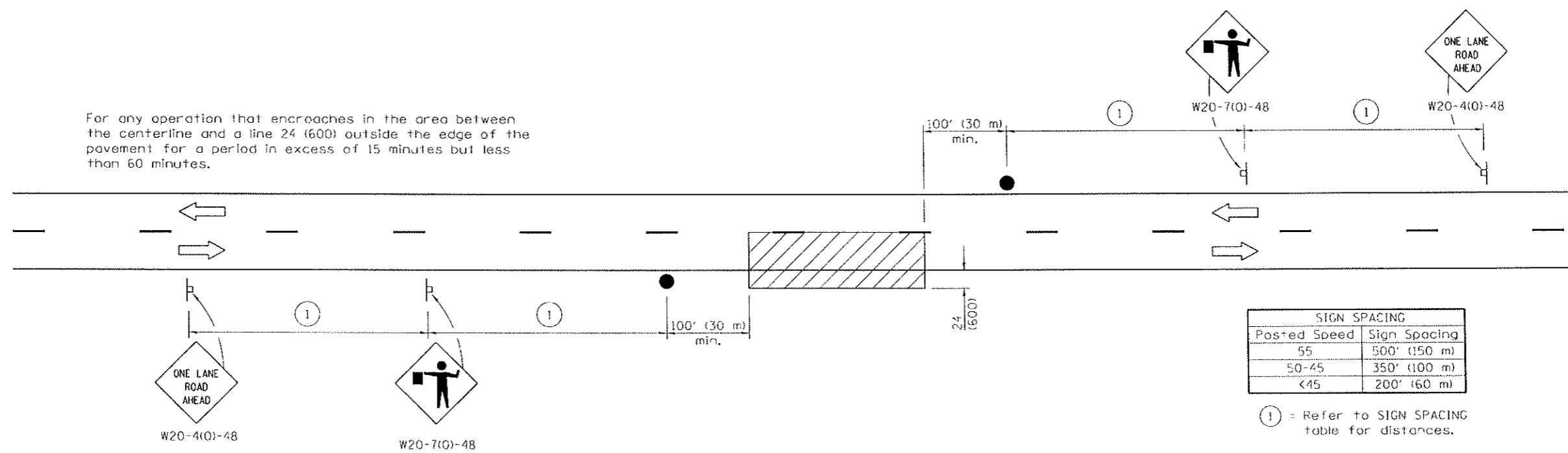
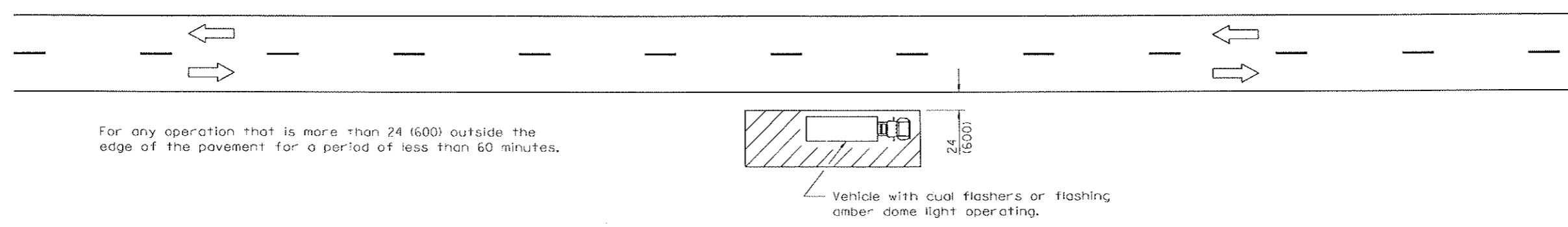
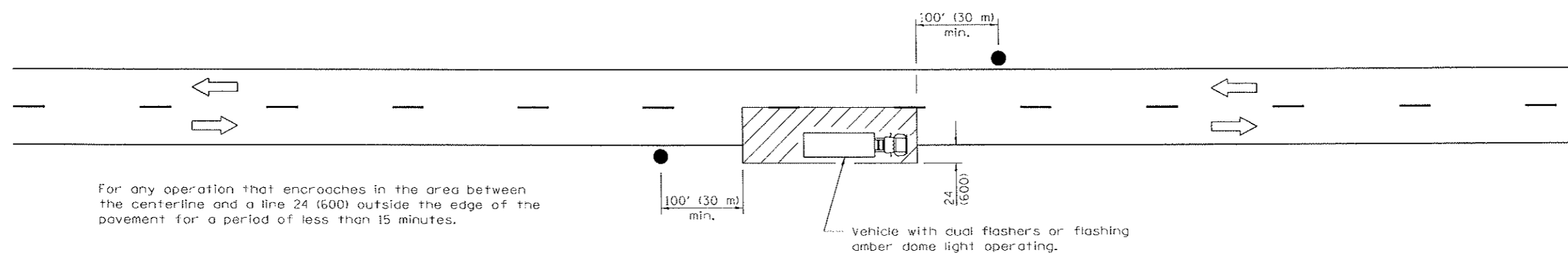
APPROVED January 1, 2011  
*[Signature]*  
 ENGINEER OF DESIGN AND ENVIRONMENT

ISSUED 1-1-9

DATE	REVISIONS
1-1-11	Revised flagger sign.
1-1-09	Switched units to English (metric). Corrected sign No.'s.

**LANE CLOSURE, 2L, 2W,  
DAY ONLY,  
FOR SPEEDS ≥ 45 MPH**

**STANDARD 701201-04**



**TYPICAL APPLICATIONS**

- Marking patches
- Field survey
- String line
- Utility operations
- Cleaning up debris on pavement

**SYMBOLS**

- Work area
- Sign on portable or permanent support
- Flagger with traffic control sign

All dimensions are in inches (millimeters) unless otherwise shown.

Illinois Department of Transportation

APPROVED January 1, 2011  
*Amelia O'Neil*  
 ENGINEER OF SAFETY ENGINEERING

ISSUED 1-1-97

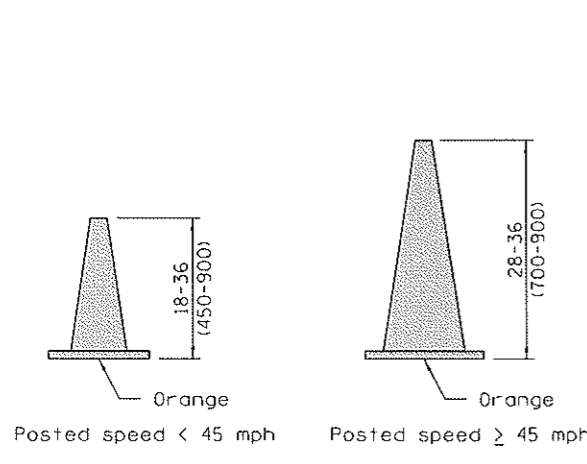
APPROVED January 1, 2011  
*Scott Smith*  
 ENGINEER OF DESIGN AND ENVIRONMENT

DATE	REVISIONS
1-1-11	Revised flagger sign.
1-1-09	Switched units to English (metric).

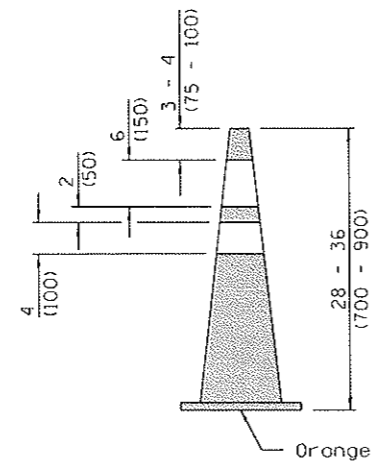
**LANE CLOSURE, 2L, 2W,  
SHORT TIME OPERATIONS**

**STANDARD 701301-04**

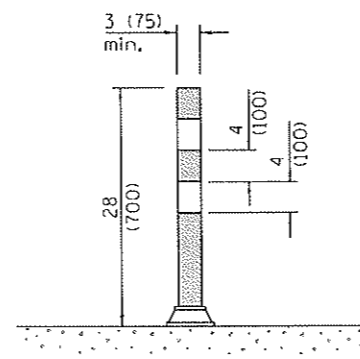




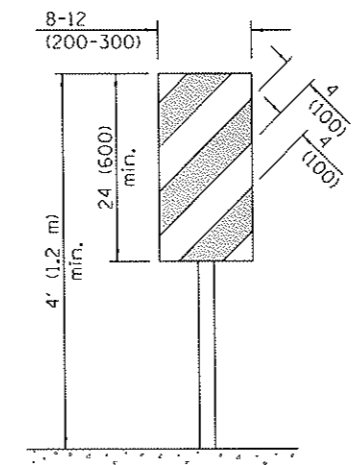
**CONE FOR DAYTIME**



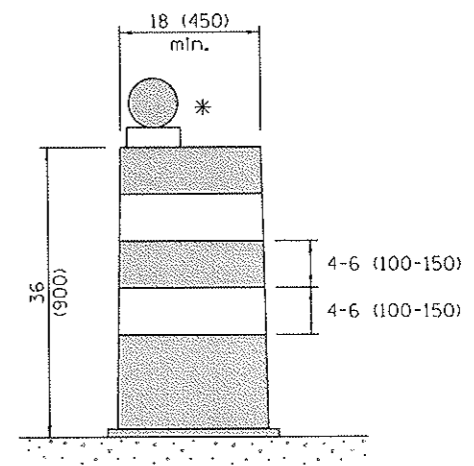
**REFLECTORIZED CONE FOR NIGHTTIME**



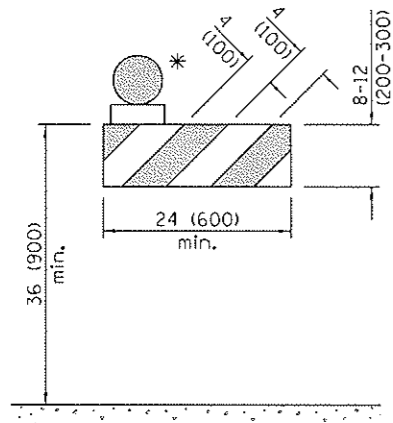
**FLEXIBLE DELINEATOR**



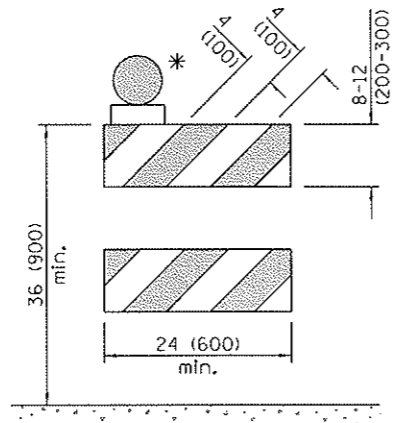
**VERTICAL PANEL POST MOUNTED**



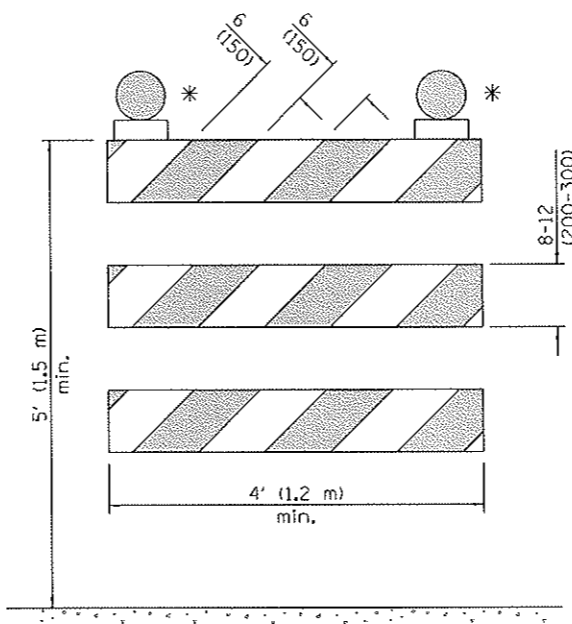
**DRUM**



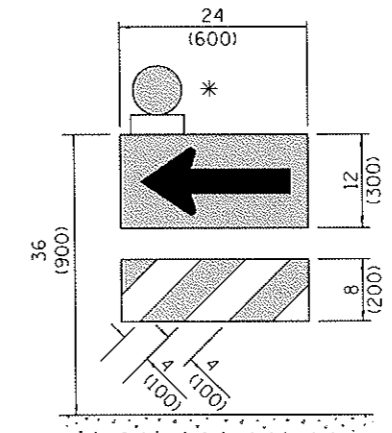
**TYPE I BARRICADE**



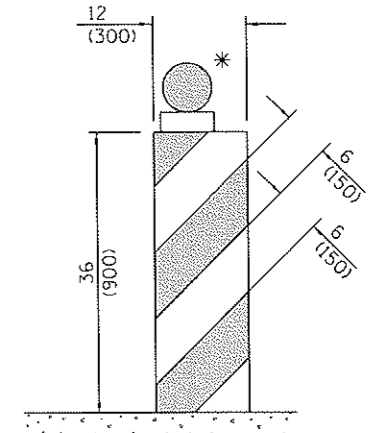
**TYPE II BARRICADE**



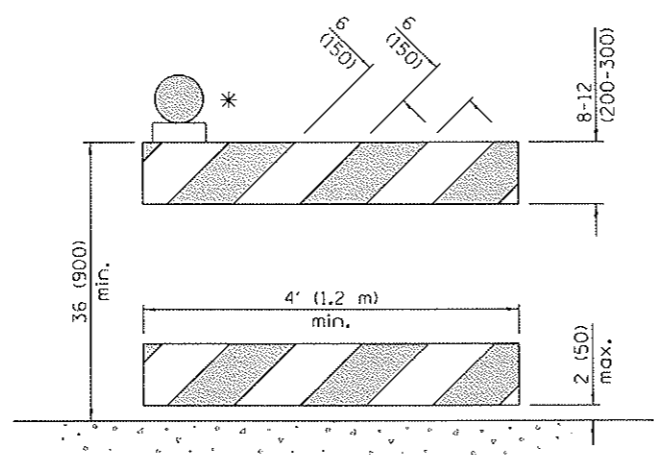
**TYPE III BARRICADE**



**DIRECTION INDICATOR BARRICADE**



**VERTICAL BARRICADE**



**DETECTABLE PEDESTRIAN CHANNELIZING BARRICADE**

\* Warning lights (if required)

**GENERAL NOTES**  
 All heights shown shall be measured above the pavement surface.  
 All dimensions are in inches (millimeters) unless otherwise shown.

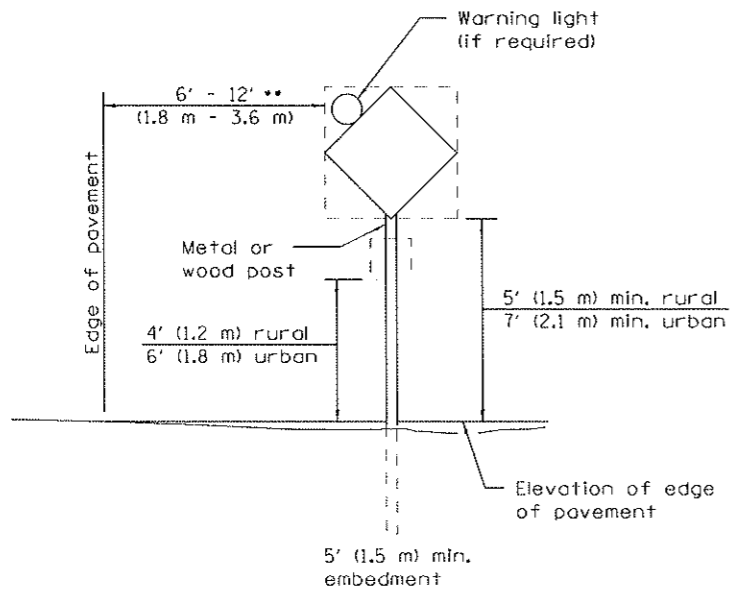
Illinois Department of Transportation  
 APPROVED April 1, 2016  
 ENGINEER OF OPERATIONS  
 APPROVED April 1, 2016  
 ENGINEER OF DESIGN AND ENVIRONMENT

DATE	REVISIONS
4-1-16	Add dim's to barricades, Rev. note for post mt. signs.
1-1-15	Rev. cone dths, Add W12-103.
	Revised two sign numbers on sheet 2. Added note reg. PHOTO ENFORCED plaque.

**TRAFFIC CONTROL DEVICES**

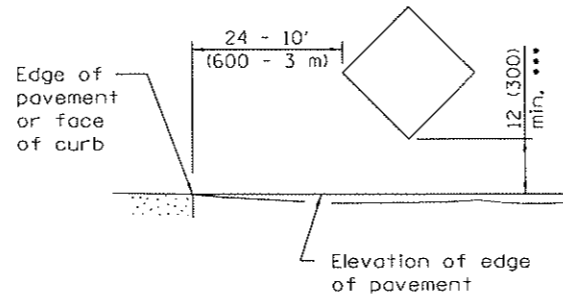
STANDARD 701901-05

(Sheet 1 of 3)



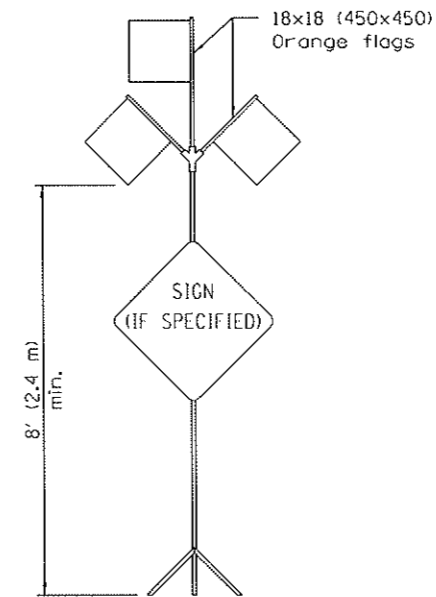
**POST MOUNTED SIGNS**

\*\* When curb or paved shoulder are present this dimension shall be 24 (600) to the face of curb or 6' (1.8 m) to the outside edge of the paved shoulder.



**SIGNS ON TEMPORARY SUPPORTS**

\*\*\* When work operations exceed four days, this dimension shall be 5' (1.5 m) min. If located behind other devices, the height shall be sufficient to be seen completely above the devices.



**HIGH LEVEL WARNING DEVICE**

ROAD CONSTRUCTION NEXT X MILES	END CONSTRUCTION
G20-1104(O)-6036	G20-1105(O)-6024

This signing is required for all projects 2 miles (3200 m) or more in length.

ROAD CONSTRUCTION NEXT X MILES sign shall be placed 500' (150 m) in advance of project limits.

END CONSTRUCTION sign shall be erected at the end of the job unless another job is within 2 miles (3200 m).

Dual sign displays shall be utilized on multi-lane highways.

**WORK LIMIT SIGNING**

WORK ZONE	W21-1115(O)-3618
SPEED LIMIT <b>XX</b>	R2-1-3648
PHOTO ENFORCED	R10-1108p-3618 ....
\$XXX FINE MINIMUM	R2-1106p-3618

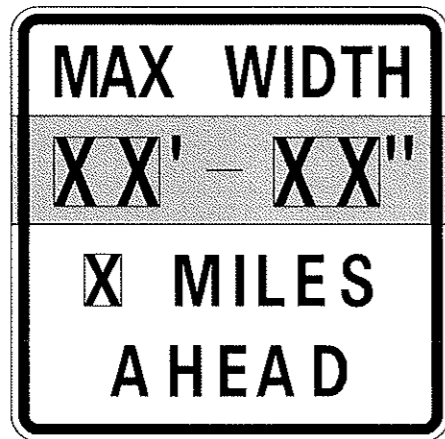
Sign assembly as shown on Standards or as allowed by District Operations.

END WORK ZONE SPEED LIMIT	G20-1103(O)-6036
---------------------------------	------------------

This sign shall be used when the above sign assembly is used.

**HIGHWAY CONSTRUCTION  
SPEED ZONE SIGNS**

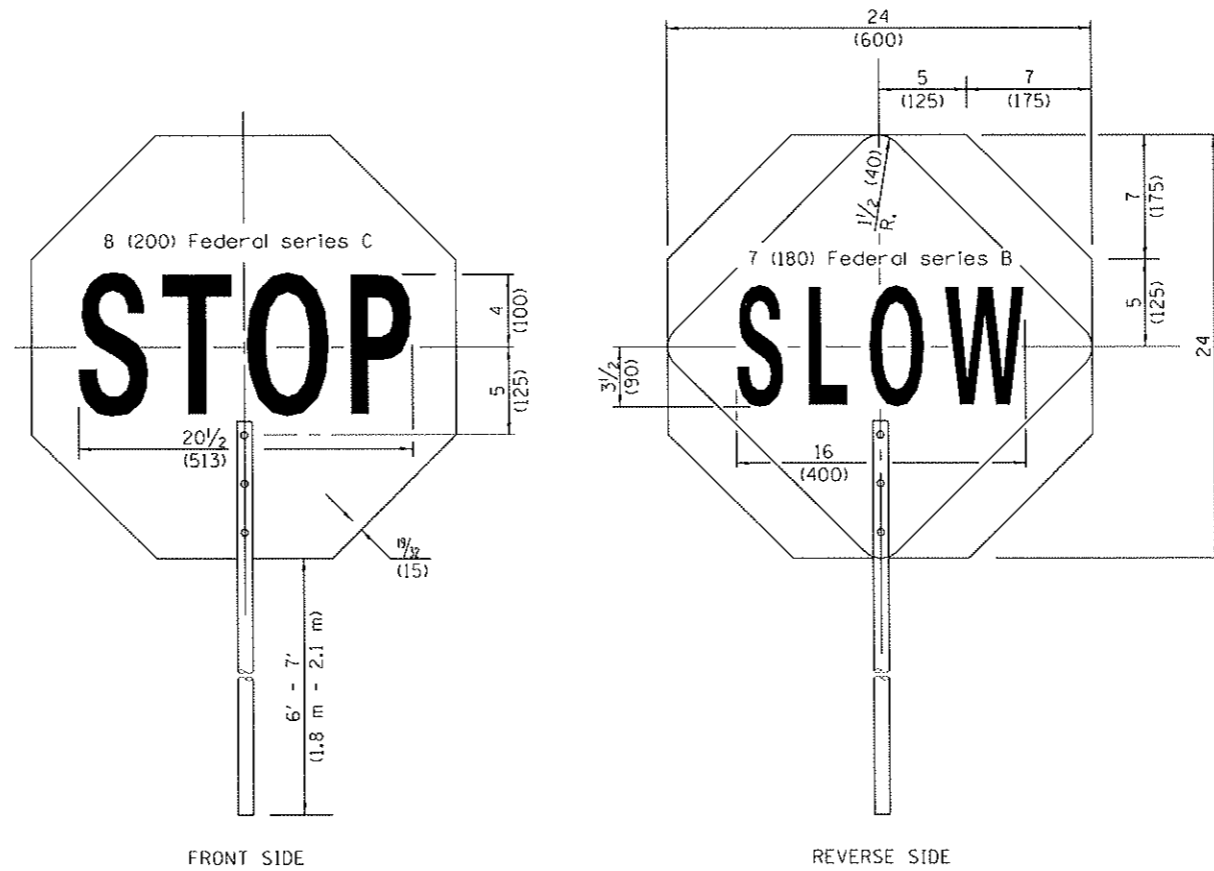
.... R10-1108p shall only be used along roadways under the jurisdiction of the State.



W12-1103-4848

**WIDTH RESTRICTION SIGN**

XX'-XX" width and X miles are variable.



**FLAGGER TRAFFIC CONTROL SIGN**

Illinois Department of Transportation

APPROVED April 1, 2016

ENGINEER OF OPERATIONS

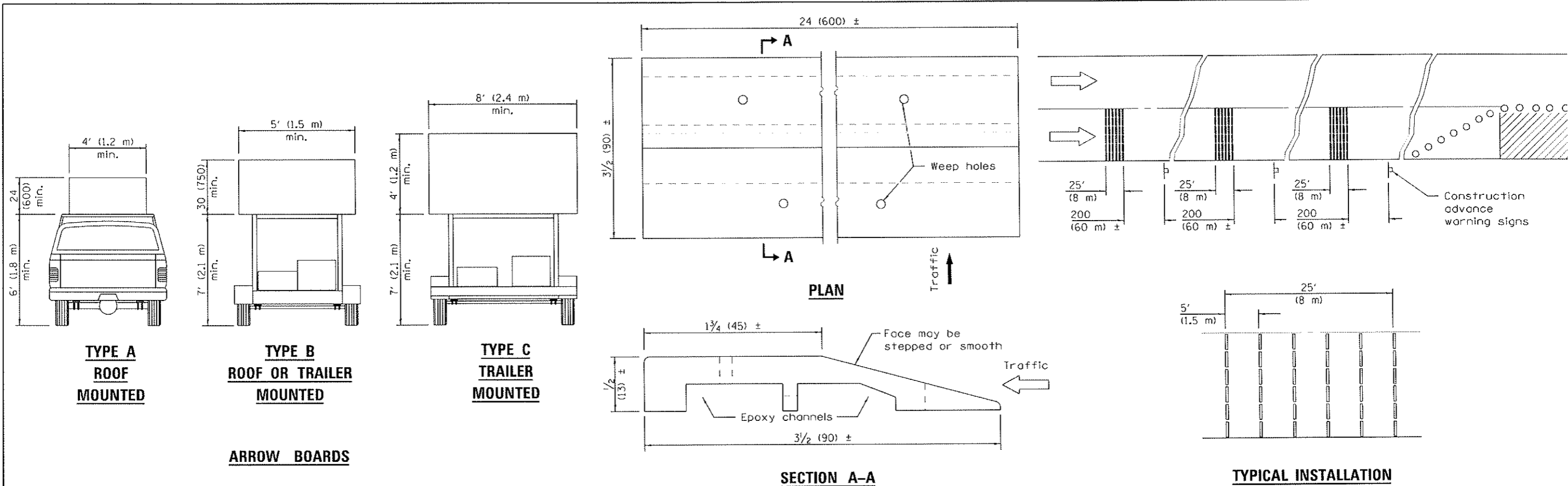
APPROVED April 1, 2016

ENGINEER OF DESIGN AND ENVIRONMENT

**TRAFFIC CONTROL  
DEVICES**

(Sheet 2 of 3)

STANDARD 701901-05



**TYPE A  
ROOF  
MOUNTED**

**TYPE B  
ROOF OR TRAILER  
MOUNTED**

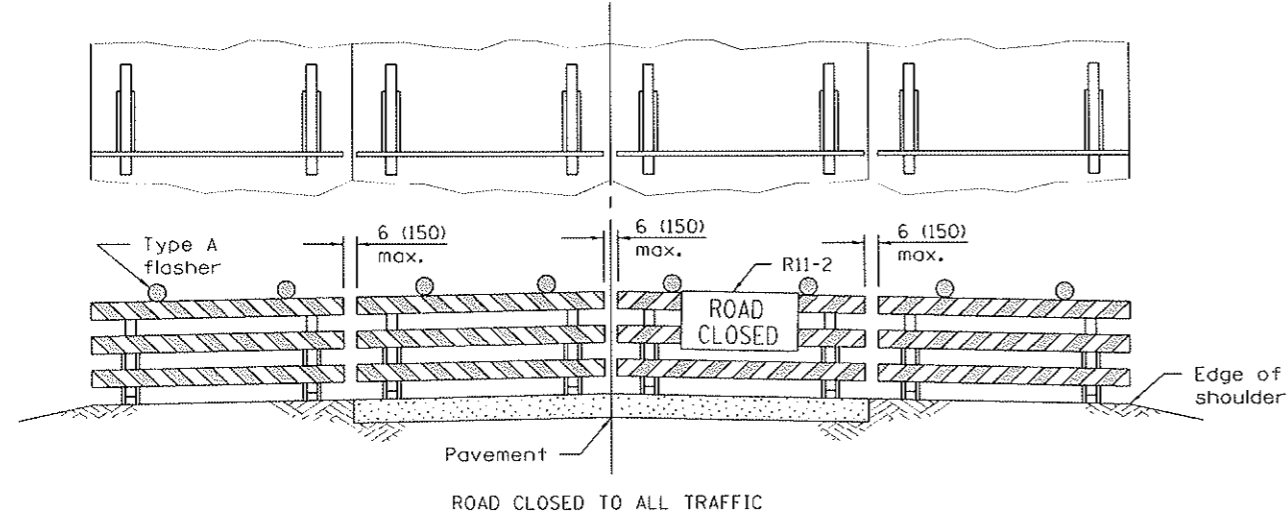
**TYPE C  
TRAILER  
MOUNTED**

**ARROW BOARDS**

**SECTION A-A**

**TEMPORARY RUMBLE STRIPS**

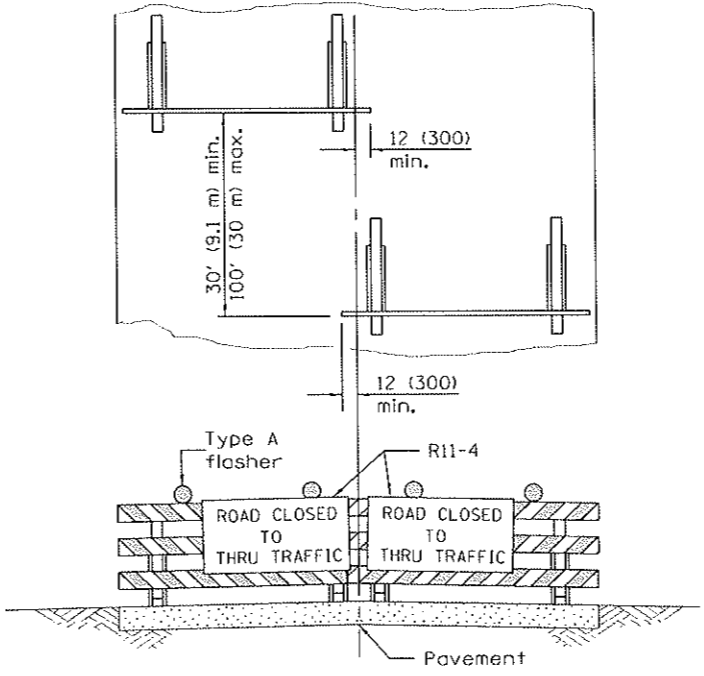
**TYPICAL INSTALLATION**



ROAD CLOSED TO ALL TRAFFIC

Reflectorized striping may be omitted on the back side of the barricades. If a Type III barricade with an attached sign panel which meets NCHRP 350 is not available, the sign may be mounted on an NCHRP 350 temporary sign support directly in front of the barricade.

**TYPICAL APPLICATIONS OF  
TYPE III BARRICADES CLOSING A ROAD**



ROAD CLOSED TO THRU TRAFFIC

Reflectorized striping shall appear on both sides of the barricades. If a Type III barricade with an attached sign panel which meets NCHRP 350 is not available, the signs may be mounted on NCHRP 350 temporary sign supports directly in front of the barricade.

Illinois Department of Transportation

APPROVED April 1, 2016

ENGINEER OF OPERATIONS

APPROVED April 1, 2016

ENGINEER OF DESIGN AND ENVIRONMENT

13-1-1 C-155

**TRAFFIC CONTROL  
DEVICES**

(Sheet 3 of 3)

**STANDARD 701901-05**