



**Peoria City/County  
Health Department**

*[www.pcchd.org](http://www.pcchd.org)*

**Annual Report 2003**

*This page (inside front cover) left intentionally blank.*

### ***Our Mission:***

It is the mission of the Peoria City/County Health Department to assure access to acceptable and appropriate health care for each citizen of Peoria County as well as to provide services to protect the public's health and to enhance the quality and quantity of human life through health education, health promotion, and preventive health services. Within its available resources, the Department will provide those services which are mandated to it; or can best be provided by it because of its unique position as a unit of government; or are necessary to fulfill an unmet community health need.

### ***Our Vision***

Identify community health needs and seek opportunities to develop collaborative partnerships with the community and other health care providers to assure access to services, and through educational efforts, regulatory authority, and public policy, improve and protect the quality of life of our community

## Peoria County Board of Health Members

Cartheda Welch  
*President*

Kathleen Baldwin, PhD, RN  
*Secretary*

Phillip Salzer  
*County Board Liaison*

Mona Aberle, RN, BSN

Cheryl Budzinski

Howard Cohen, MD

Alina Fernández, MD, MPH  
*(resigned 6/30/03)*

William O'Brien

Gene Petty

Stephen Roehm, DDS

Gary Stella

David Trachtenbarg, MD

S. Masood Ali, MD  
*(began 7/10/03)*

## Peoria City/County Health Department Administrative Staff

Andrea D. Parker, MS, RN, CPHA,  
*Director of Health (Began 6/2/03)*

Veronica Aberle, MSN, RN,  
*Interim Director of Health*  
*(10/18/02-6/1/03)*

*Director, Public Health Nursing Group*

Sue Mowbray, MA, SPHR,  
*Director, Human Resources Group*

Nancy Neel, MBA, CPA,  
*Director, Financial Services Group*  
*(Retired 5/30/03)*

Gene Huber, MA, MPA,  
*Director, Financial Services Group*  
*(Began 6/2/03)*

Samuel W. Churchill, MS, RS, LEHP,  
*Director, Environmental Health Group*  
*(Retired 11/7/03)*

Diana Rawlings, BS, LEHP,  
*Interim Director, Environmental*  
*Health Group (11/10/03 – 2/27/04)*

Kate Van Beek, MS,  
*Director, Health Promotion*  
*& Education Group (Resigned 9/5/03)*

Hla Phone,  
MBBS, MS, DTMH, FACTM  
*Interim Director, (9/8/03 - 10/19/03)*  
*Director, (Began 10/20/03)*  
*Health Promotion & Epidemiology Group*

Sue Bishop, DMD,  
*Director, Dental Health Group*

Stephen C. Doughty, MD,  
*Medical Advisor*

## Dear Citizens of Peoria County:

On behalf of the Peoria City/County Health Department:

When I first became a member of the Board of Health in 1997, I was very excited because it gave me a chance to find out more about what the Board of Health was all about. When I go out to various organizations giving presentations I try to make them more aware of the programs available to them at the health department.

In the year 2003, I became the Board of Health President. I am still currently serving in that position. I am very pleased to work with such a strong Board of Health. They have proven to me that they are there for the community. I have learned more about different diseases like STDs and the challenges that come with them. The health department has been able to provide me with different literature so that I may go out and explain to individuals how they can be served by the health department and what programs and assistance is available to them.

Our Director of Health, Andrea Parker, is very supportive and she is always there to assist you in any way she can. The Peoria City/County Health Department is available as a community health resource. We should feel comfortable with contacting any of the administrative team, as well as the specific program staff to assist us. We are looking forward to great accomplishments with our new director to guide us in the near future.

Very Respectfully Yours,

A handwritten signature in black ink that reads "Cartheda Welch". The signature is written in a cursive style with a large initial "C".

Cartheda Welch  
President, Board of Health

## Dear Citizens of Peoria County:

For the Peoria City/County Health Department, the year 2003 brought many challenges to prepare us for continuing to protect you, the citizens. First, the Board of Health hired a new Director of Health as the administrator, and other key administrative positions were also filled: Gene Huber became the Director of Finance, Hla Phone accepted the position of Director of Health Promotion and Epidemiology. Other positions were filled throughout the agency as well.

We are a vibrant agency and we continue to support and participate in the community preparedness initiatives that not only address biological events, but all major attacks that would affect this community and surrounding communities. And, throughout our efforts, we maintain the expertise of our daily public health duties of assessment, assurance and policy development. As an example, in the year 2002 Illinois led the nation on positive West Nile virus cases, for 2003 our surveillance efforts did not allow for any positive human cases, thus no deaths. We saw our country experience Monkey Pox, SARS, and death of children all related to the spread of disease, but not in this community.

We are investigating new technology that will allow for common communication with other community health providers that will enhance surveillance activities. We are working in partnership with a multitude of agencies all for the purpose of protecting this community. This report will demonstrate our commitment to being a community partner in health safety. I am pleased with the efforts that this agency produces and look forward to providing the necessary health support to keeping this community safe.

A handwritten signature in black ink that reads "Andrea D. Parker". The signature is written in a cursive, flowing style.

Andrea Parker, MS, RN, CPHA  
Director of Health

## Strategic Planning

2003 was a year of minor changes and realizations in the strategic planning process. Our Board of Health was updated in January with accomplishments of 2002 and the timeline for the remainder of the Strategic Plan. Without a Director of Health until June, the steering committee spent a great deal of time carefully scrutinizing our current work processes. This evaluation of outcomes and strategic processes identified many that are now integrated into service delivery, what we do every day. Having realized many outcomes, the steering committee looked to the new Director for vision and planning. The development of new outcomes and processes to begin 2004 incorporate the many changes that Public Health has seen in the past 2 years and will lead the agency into the next strategic planning cycle.

## Essential Public Health Services

The following are the 10 essential public health services that provide the foundation of public health programming throughout the country.

- Monitor health status to identify community health problems
- Diagnose and investigate health problems and health hazards in the community
- Inform, educate, and empower people about health issues
- Mobilize community partnerships to identify and solve health problems
- Develop policies and plans that support individual and community health efforts
- Enforce laws and regulations that protect health and ensure safety
- Link people to needed personal health services and assure the provision of health care when otherwise unavailable
- Assure a competent public health and personal health care workforce
- Evaluate effectiveness, accessibility, and quality of personal and population-based health services
- Research for new insights and innovative solutions to health problems

*Source: National Association of County and City Health Officials (NACCHO)*

## Finance and Human Resource Groups

The operational administration of the department involves management oversight of the various groups, programs and activities as well as provision of internal services. Internal services provided by the Human Resources Group include labor relations, payroll and personnel functions and facilities management. The Financial Services Group directs budget and financial management, purchasing, central supplies and switchboard. Both Groups work closely with the Board of Health, County Administration and various departments within the County, as well as leadership within State agencies.

This year the Health Department has continued to see flat funding or minimal increases in our grant funding. Additionally, the proposed 2004 budget includes a reduction in the tax levy, decreasing the expected property tax revenue to the Health Department by \$240,000. This reduction will necessitate constant monitoring of the agency budget to ensure that the Health Department continues to meet the public health needs of the County of Peoria for which we are responsible. Another major change that occurred during 2003 was the centralization of the accounts payable system. Based on the auditor's recommendations, all county agencies payables are now centrally entered. This has necessitated copying all of the invoices and documentation in order to maintain information at the Health Department for use in grant billing, etc., thereby increasing the amount of time needed to process bills for payment.

This year the County of Peoria offered an early retirement incentive to all employees who were at least 50 years of age and had at least 20 years of service with the Illinois Municipal Retirement Fund (IMRF).

We had 18 employees eligible for this incentive. These employees were allowed to take this incentive anytime during the calendar year 2003. With this incentive the Health Department would only be able to refill 2 out of every 3 positions that took this option. We had 12 employees elect to take this incentive. This has had a huge impact on the Health Department in terms of transition, loss of knowledge, and operating with fewer employees. This has created an opportunity for us to look at ways to realign our needs to be able to continue to offer the services to both our internal and external clients. Throughout the year we evaluated all open positions to ensure we would be able to meet our requirement of refilling only 2 in 3 positions, while still maintaining quality services. With this financial planning we were able to achieve the reductions in positions through attrition. We were fortunate to be able to fill several open positions with current qualified staff.

Another challenge we faced in 2003 was filling the Director of Health position. With the help of the Search Committee, the Board of Health was able to select and offer this position to Andrea Parker. The Board fulfilled last year's goal of bringing the most qualified candidate to Peoria County. There has been transition within the Leadership team in 2003. With the early retirement incentive and promotion within the County, we lost 3 of the 6 Group Directors. This has given us the opportunity to reevaluate our goals and strategic plan for the agency under the guidance of Andrea Parker.



*Fiscal Year 2003 Budget***Revenues**

Local Taxes .....	\$2,054,090
Grants & Contracts.....	3,082,683
Home Care .....	—
Fees & Misc. ....	2,374,509
Cash Balance .....	1,711,656
Prior Year's Taxes .....	3,000

**Total .....** **\$ 9,225,938**

**Expenses**

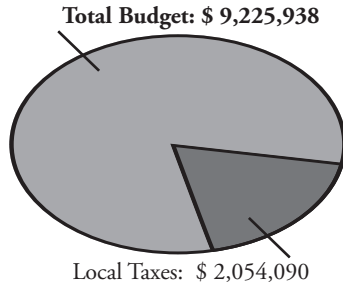
Salaries .....	\$ 4,795,662
Other Personnel Costs.....	847,680
Operating Costs .....	1,036,647
Contractual .....	1,174,974
Capital Expenses .....	80,000
Required Cash Reserve .....	1,290,975

**Total .....** **\$ 9,225,938**

**Fiscal Year Budgets 1999-2002**

<b>Revenues</b>	<b>1999</b>	<b>2000</b>	<b>2001</b>	<b>2002</b>
Local Taxes	\$ 1,800,000	\$ 1,898,694	\$ 1,984,822	\$ 2,086,863
Grants & Contracts	3,498,650	4,338,840	4,068,772	4,005,691
Home Care	52,000	—	—	—
Fees & Misc.	1,303,702	1,418,300	1,526,750	1,816,450
Cash Balance	872,466	1,093,902	1,245,113	1,055,288
Prior Year's Taxes	3,000	3,000	3,000	3,000
<b>Total</b>	<u><b>\$ 7,529,818</b></u>	<u><b>\$ 8,752,726</b></u>	<u><b>\$ 8,828,457</b></u>	<u><b>\$ 8,967,292</b></u>
<b>Expenses</b>				
Salaries	\$ 4,373,873	\$ 4,577,597	\$ 4,953,759	\$ 4,817,201
Other Personnel Costs	380,233	528,821	598,675	721,087
Operating Costs	1,235,308	1,408,204	1,569,779	1,313,894
Contractual	1,351,726	1,956,100	1,414,384	990,700
Capital Expenses	188,678	282,004	291,860	128,500
Required Cash Reserve	—	—	—	995,910
<b>Total</b>	<u><b>\$ 7,529,818</b></u>	<u><b>\$ 8,752,726</b></u>	<u><b>\$ 8,828,457</b></u>	<u><b>\$ 8,967,292</b></u>

## Taxes as Percentage of 2003 Total Budget



Year	Local Taxes	Percentage of Total Budget
2003.....	\$ 2,054,090 .....	22.3%
2002.....	2,086,863.....	23.2%
2001.....	1,984,822.....	22.5%
2000.....	1,898,684.....	21.7%
1999.....	1,800,000.....	23.9%
1998.....	1,702,995.....	23.7%
1997.....	1,621,287.....	22.9%
1996.....	1,665,000.....	23.8%
1995.....	1,441,500.....	22.8%
1994.....	1,351,000.....	23.2%
1993.....	1,254,573.....	23.6%

## Peoria City/County Health Department Work Force Analysis:

It is the overall objective of this department to employ a work force which can effectively and efficiently deal with public health problems and which reasonably reflects the composition of the population of the County of Peoria.

The female population of Peoria County is 51.9%\*. Of the Health Department employees, 88.7%\*\* are female. The minority population of Peoria County is 20.6%\*. Of Health Department employees\*\*, 14.5% are minorities. This is slightly lower last year's 15.9% figure.

\*Based on 2000 Census data

\*\*as of 1/1/04

	Total	Male		Female	
		White	Minority	White	Minority
Managerial	20	4	1	14	1
Professional	56	4	0	46	6
Technical	6	1	0	5	0
Paraprofessional	3	0	0	3	0
Office & Clerical	35	1	0	26	8
Service/Maintenance	4	2	1	0	1
<b>Total</b>	<b>124</b>	<b>12</b>	<b>2</b>	<b>94</b>	<b>16</b>
<b>Percentage</b>		<b>9.7%</b>	<b>1.6%</b>	<b>75.8%</b>	<b>12.9%</b>

# Dental Group

Dental services were delivered to widely divergent populations in 2003 through collaborative efforts. Some areas where services were provided include: 62 county schools, Heartland Clinic, Bel-Wood Nursing Home, Peoria Association of Retarded Citizens (PARC), Youth Farm, Children’s Home, Allied Agencies and Head Start School Programs. In addition to these unique groups in our community, HIV-positive patients, patients with hemophilia, and inmates at the Peoria County Jail were seen throughout the year.

The demand for low-income/medical card dental services continues to increase yearly. Because of a 6% decrease in the reimbursement rate for Medicaid dental services, the clinic is providing dental services for select adult populations only (i.e. Developmentally Disabled, HIV, Heartland and Mother Francis Krasse Clinics to name some of the populations). The Volunteer Dental Clinic at Allied Agencies continues to provide dental services for the uninsured, but funding for this clinic may also be decreased.

A new donated software program in Dental Clinic facilitates an improved method of identifying community based oral health needs of children. The children’s clinic continues to provide preventative and comprehensive care to children unable to find a dentist due to the family’s inability to pay or because of their Public Aid status (which reimburses dentists at such a low rate — those expenses/overhead are not reimbursed). Despite continued contributions by Peoria District Dental Society members, it is difficult to keep pace with the rising demand for dental services. Peoria County is fortunate to have several

volunteer dentists treating low-income/public aid patients. (Most central Illinois counties have only 0-1 dentists volunteering to treat these populations.)

Dental services also include exams, cleaning, fluoride, sealants and referrals for needed care to children in various school settings. The numbers in the dental statistics section reflect a total of all services provided to all populations throughout the Dental community.

## Community Dental Health Statistics

	<i>2003</i>	<i>2002</i>
Examinations .....	26,500	26,250
Sealants .....	18,500	18,300
Classroom Presentations (Children Served) .....	4,500	4,500
Other Dental Services .....	50,100	50,100

## Environmental Health Group

The Environmental Health Group works to ensure the health of the residents of Peoria County by conducting inspections, permitting, providing education and responding to complaints in several programs. These programs include: Food Protection, Water Protection, Private Sewage Disposal System Design, Childhood Lead Poisoning Prevention, Tanning Salon Inspections, Vector Control, Housing and Nuisance Complaints.

### Food Protection Program:

The Environmental Health staff provides services to the community in the food protection program by reviewing plans for proposed food service facilities, licensing these facilities and conducting inspections. In addition, substantial time is spent educating the public on food safety sanitation by way of classes taught at the Health Department and presentations given throughout the County.

<i>Food Program Inspections</i>	2003	2002
Food Protection .....	3,198	4,124
Temporary Food Stands .....	733	686
Pushcart Inspections	2003	2002
Total Inspections/Carts .....	196/14	168/12

### Total Major Violations Found and

**Corrected Food Facility Inspections:** .....3,176.....2,477

<i>Compliance Actions</i>	2003	2002
Conferences .....	6	39
Hearings .....	0	2
Voluntary Closures .....	10	12

2003                      2002

### Food Certification Classes:

Total # of classes/attendees..... 8/330..... 8/377

### Food Certification Refresher Classes:

Total # of classes/attendees..... 8/143..... 8/144

### Pre-Operational Food Service Classes:

Total # of classes/attendees..... \*42/105..... \*\*49/165

\* Represents 87 new or change of ownership food facilities.

\*\* Represents 118 new or change of ownership food facilities.

### Water Protection Program:

The Environmental Health staff provides services to the community in the water protection program by working to ensure private, semi-private and non-community public water supplies (such as wells providing water to schools and restaurants) provide clean, safe water. Water wells are permitted, inspected and sampled.

<i>Inspections</i>	2003	2002
Private & Semi-Private Water Wells: .....	570	866
Non-Community Public Water Supply:.....	122	110
Private & Semi-Private Water Wells –		
Loan Approvals.....	50	68

(continued below)

**Private Sewage Disposal System Program:**

The Environmental Health staff provides services to the community in the PSDS Program by ensuring that these systems are permitted, constructed and operated correctly.

<i>Inspections</i>	<i>2003</i>	<i>2002</i>
Private Sewage Systems: .....	1,320.....	2,031
Private Sewage Pumping Trucks: .....	8.....	6
PSDS Systems – Loan Approvals: .....	243.....	604

**Childhood Lead Poisoning Prevention Program:**

The Environmental Health staff provides services to the community in the CLPPP by conducting lead risk assessments on homes occupied by children with elevated blood lead levels and ensuring that these homes are made lead safe.

<i>Inspections</i>	<i>2003</i>	<i>2002</i>
Lead Risk Assessments: .....	41.....	32
Homes Mitigated.....	36.....	32

**Tanning Salon Inspections:**

The EH staff provides services to the community in the Tanning Salon Inspection Program by conducting inspections to ensure that tanning salons are safe, sanitary and operated in a safe manner.

<i>Inspections</i>	<i>2003</i>	<i>2002</i>
Tanning Salons: .....	47.....	45

**Vector Control Program:**

The EH staff provides services to the community in the Vector Control Program by providing education on mosquito control and West Nile Virus, as well as conducting active surveillance through mosquito testing and bird testing. In addition, this group employs a full-time person for the summer months to investigate vector complaints and conduct this program.

	<i>2003</i>	<i>2002</i>
Mosquito/West Nile Virus Public Contacts: .....	172.....	120

**Mosquito/West Nile Virus Investigations:**

<i>Inspections</i>	<i>2003</i>	<i>2002</i>
Housing Inspections: .....	145.....	208

**Nuisance Control Program:**

The EH Group provides services to the community through the Nuisance Control Program by investigating complaints such as rodent control and solid waste disposal.

<i>Nuisance Control Inspections</i>	<i>2003</i>	<i>2002</i>
Rodent Control: .....	30.....	39
Solid Waste: .....	45.....	33
General Nuisance Control: .....	26.....	19

<i>Inspections</i>	<i>2003</i>	<i>2002</i>
Other EH Services (Inspections): .....	300.....	278

## Health Promotion and Epidemiology Group

- Encourages healthy lifestyle choices and to assist individuals to effectively manage behavior change through awareness and educational efforts.
- Conducts health data analysis and develops community needs assessment to identify public health problems in the community.

### Programs and Services

#### Health Break Program

- Provides various school health education programs to reinforce health curriculum for Peoria County students grades K-12.

	2003	2002
Total number of presentations given: .....	266	118
Total number of children served: .....	5,266	4,502

#### Speaker's Bureau/Community Fairs

- Provides quality health education presentations on numerous health topics as requested by social service agencies and community groups.

	2003	2002
Total number of presentations given: .....	182	213
Total number of people served: .....	2,513	5,990

#### Heart Smart for Women

- Identifies women at risk for cardiovascular disease and educate them on risk factors associated with the disease and to promote healthy preventive behaviors.

	2003	2002
Number of women served.....	74	101

#### HIV Consortium/Education

- *Regional Implementation Grant (RIG)*: Provides HIV prevention education, outreach, counseling, and testing services to high-risk groups and the general population.
- *HIV Consortium Grant*: Provides essential supportive services to HIV/AIDS clients including, but not limited to, medical care, housing, counseling, information and referral, and case management.

	2003	2002
Consortium clients: .....	363	365
Education clients: .....	2,300	1,525
Outreach HIV testing clients: .....	104	119

#### Tobacco-Free Communities Program

- Provides comprehensive tobacco prevention and control programs in Peoria County in the areas of cessation, youth prevention, environmental tobacco smoke and the reduction of disparities.

##### a. Freedom from Smoking Program

- Provides a comprehensive tobacco cessation program that uses a positive behavior change approach to teach the participant how to become a non-smoker.

	2003	2002
Number of people served:.....	215	84

**Tobacco-Free Communities Program** (continued)

**b. Make Yours a Fresh Start Family Program**

- Provides tobacco prevention education and counseling to pregnant and post-partum women who use tobacco products through WIC and Healthy Mom/Healthy Kids (HM/HK) program.

**c. Smoke-free Restaurant Recognition Program**

- Educates restaurant owners about the benefits of maintaining a smoke-free dining environment and encourages them to adopt a smoke-free policy within their establishments.

2003                      2002

Number of smoke free restaurants: .....170..... 167

**d. Smoke Free, That's Me Program**

- Provides tobacco use prevention education programs to students in the second, fourth, and sixth grades.

2003                      2002

Number of students taught:.....96.....317

**Vital Records**

- The health department issues, registers, and maintains birth certificates, death certificates and issues burial permits.

2003                      2002

Total Births: .....2,567\* ..... 2,603<sup>†</sup>

Total Deaths: ..... 1,659\* ..... 1,801<sup>†</sup>

Infant Deaths: .....22\* ..... 21

\*preliminary data  
<sup>†</sup>revised data from IDPH

**Three Core Functions of Government in Public Health**

The Institute of Medicine report, *The Future of Public Health*, extensively discussed the three core functions of government in public health: 1. Needs assessment; 2. Policy development; 3. Assurance.

These three functions relate to the critical activities of problem solving in the public health field. The major phases of problem solving include the identification of problems, the mobilization of necessary effort and resources and, finally, the assurance that vital conditions are in place and that critical services are provided.

- 1. Needs assessment** involves all activities related to community diagnosis: surveillance, identification of needs, analysis of the causes of problems, collection and interpretation of data, case-finding, monitoring and forecasting trends, research, and the evaluation of outcomes.
- 2. Policy development** is a complex process that fosters interaction and consensus among a wide range of public and private organizations and individuals. It is through policy that society makes decisions about problems, chooses goals and the proper means to reach them, handles conflicting points of view about ways to address problems and, finally, allocates resources. Government provides guidance in this process.
- 3. Assurance relates** to implementing legislative mandates and maintaining statutory responsibility. It is critical that mechanisms be in place to guarantee that necessary services are provided to meet agreed upon goals. Assurance includes regulation of services and products provided in both the public and private sectors, accountability to people setting health objectives and providing reports on progress, and developing adequate responses to health crises. The assurance function requires the exercise of authority. It also provides the guarantee for certain health services.

## Public Health Nursing Group

The Public Health Nursing Group is integrated internally to provide service delivery across disciplines. Nurses, social workers, nutritionists, lab and allied staff provide case management services to vulnerable populations. External partnerships with the community complement and expand our effectiveness in promoting and protecting the community's health. In response to President Bush's request to prepare Public Health and medical teams against the threat of Smallpox, Nursing took the lead to organize and immunize a small team of Public Health and medical personnel with Smallpox vaccine. Ongoing efforts continue to prepare a coordinated bioterrorism response in the area. Note: Due to a change in reporting criteria, only 2003 numbers are reported.

**WIC Nutrition Program:** The WIC program promotes healthy eating habits to pregnant women, infants, and children under age five. Nutritionists and nurses help pregnant women maintain a healthy weight gain, quit or reduce smoking, and practice healthy behaviors for themselves and their families.

WIC (Caseload Average) .....4,072

**Lead Screening:** Children from six months to six years old are screened for lead poisoning. Elevated blood lead levels may require nurse case management and education, and environmental evaluation of homes. New Lead Elimination Grant activities initiated in 2003.

Clients Screened .....582

## MCH Case Management Programs:

*Healthy Moms/Healthy Kids* is a case management program for at-risk pregnant women, infants and children. Social workers and nurses work to assure that pregnant women receive the earliest possible access to health care and support services.

Healthy Moms/Healthy Kids (Caseload) .....2,053

*Teen Parent Services* case managers assist parents under 21 years of age, who have not completed high school or equivalent, to complete their education and improve parenting skills. This was a new program in 2003.

Teen Parent Services (Caseload) ..... 52

*Targeted Intensive Prenatal Case Management* is intensive case management that intervenes with pregnant women at highest risk of delivering premature or low birth weight babies.

Average caseload ..... 170

Percent of infant births  $\geq$  5.5 lbs. .... 84%

*HealthWorks of Illinois* case managers provide medical case management to the wards of the State of Illinois residing in Peoria County.

HealthWorks Lead Agency (6 county network) Wards .....1,229

HealthWorks Peoria Wards ( $\leq$  6 years of age) .....281

HealthWorks Peoria Wards ( $>$  6 years of age) .....528

(continued below)



**Immunizations:** Immunizations for children and adults walk-in, appointment, and community-based clinics provide primary series vaccines and boosters to children and adults. Coordination of public vaccine supply with area physicians maximizes the efficient delivery of vaccines in the community. Foreign Travel provides immunizations for those traveling abroad.

Influenza Immunizations .....	4,427
Pneumonia Immunizations .....	128
Foreign Travel Immunizations .....	2,423
Adult Immunizations.....	2,532
Infant/Child Immunizations.....	6,673

**Healthy Lifestyles:** Healthy Lifestyles works to prevent transmission of sexually transmitted diseases by providing confidential screening, diagnostic testing and treatment, as well as epidemiological follow up of cases and contacts of infected persons.

STD Clinic Attendance .....	3,108
HIV Counseling & Testing .....	2,332

**Communicable Disease/Tuberculosis Program:** The Communicable Disease Program monitors incidence of infectious disease in the community, and initiates control measures and epidemiological follow-up of reported cases and outbreaks. The Tuberculosis Clinic provides TB skin tests, diagnosis, treatment, and epidemiologic and contact investigation.

Clients screened (TB Skin Test & Chest X-Ray) .....	796
Clients treated preventively.....	44
New active cases treated.....	2

**Access to Care:** Access to Care provides a link between Peoria City/ County Health Department and medical providers to promote the public's health through program information, advocacy, and collaborative problem solving. Develops and maintains provider networks for provision of preventive medical care and health screening to populations at risk.

Vaccines for Children+ (Providers).....	65
Provider Network (Providers) .....	130
Prostate (Screening) .....	33
KidCare Applications (Assisted).....	1,179

**Illinois Breast and Cervical Cancer Program:** The Illinois Breast and Cervical Cancer Program promotes awareness of breast and cervical health, and provides no-cost mammography, Pap tests, diagnostic procedures, and related office visits through participating providers.

Breast and Cervical Cancer .....	623
Komen .....	207

**Help for Seniors:** The Case Coordination Unit provides case management care coordination to seniors over 60 years of age. Clients are screened in hospitals and the community to determine level of need and referred for services. In 2003, seniors in rural Peoria County were added to our service area.

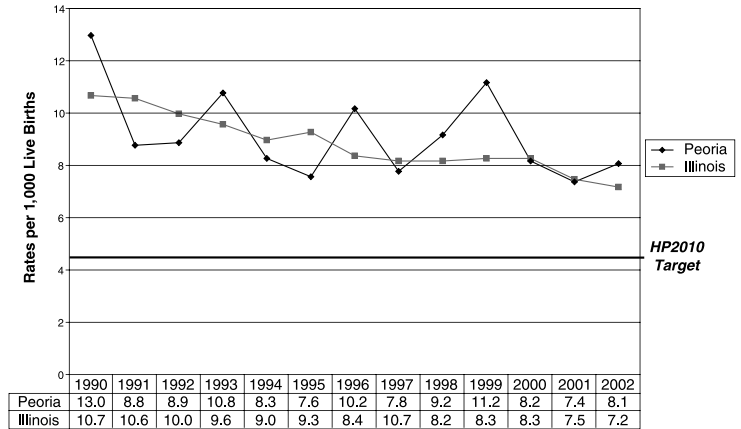
Help for Seniors (Caseload Average) .....	477
Universal Prescreens.....	1,800

## Communicable Diseases Reported to the Peoria City/County Health Department

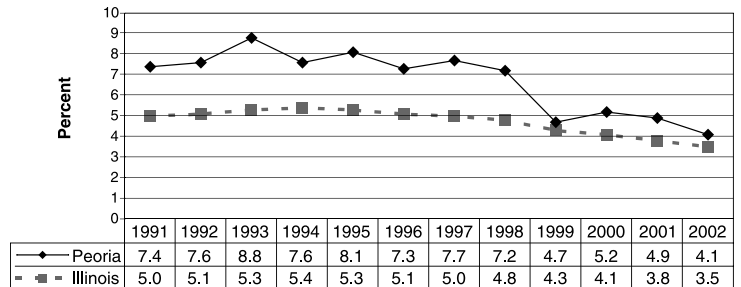
Disease	2003	2002
Bacterial Meningitis .....	8	10
Encephalitis.....	0	11
Giardiasis .....	14	16
Hepatitis (total).....	7	12
Type A.....	1	2
Type B.....	5	6
Other.....	1	4
Measles.....	0	0
Mumps .....	0	0
Pertussis .....	1	3
Rubella.....	0	0
Salmonella.....	12	19
Shigella.....	10	53
Tetanus .....	0	0

Source: Peoria City/County Health Department Provisional Data

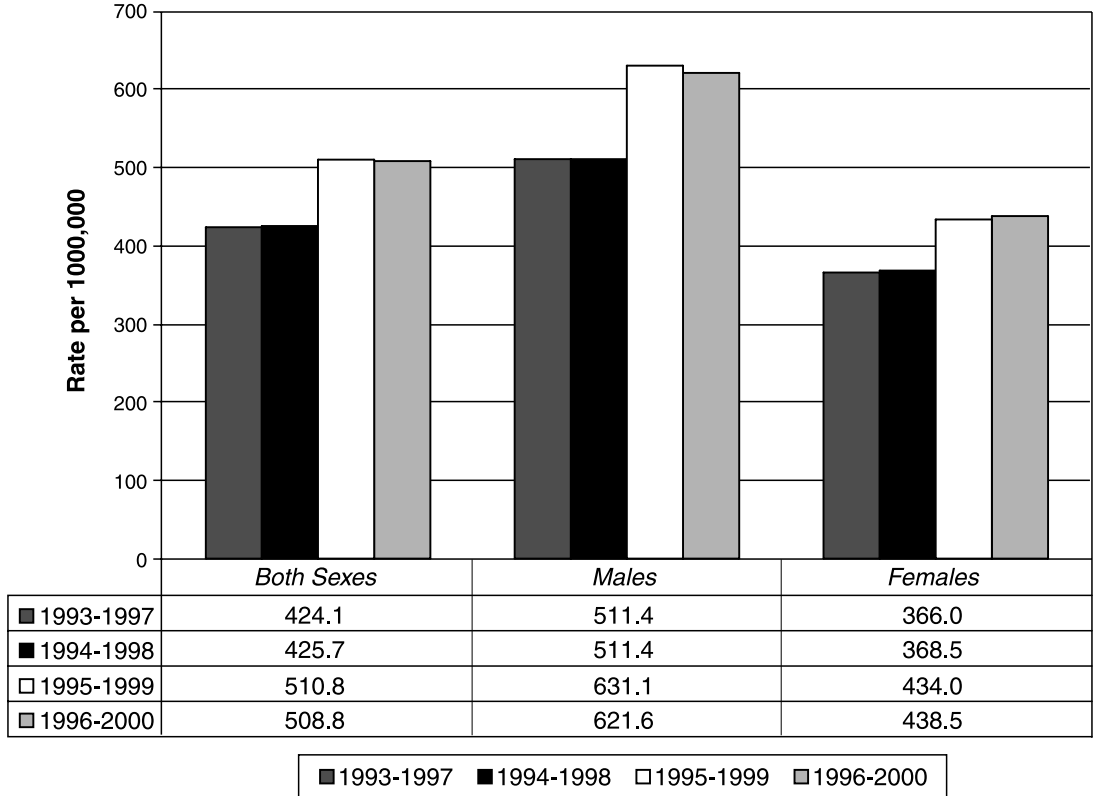
### Infant Mortality Rates Peoria County and Illinois, 1990-2002



### Percent of Births to Teens Under 18 Peoria County and Illinois, 1991-2002



**Cancer Incidence Age-adjusted Rate by Sex, Peoria County, All Sites (1990-2000)**  
**Rates are age-adjusted to the 2000 U.S. Std. Population**



## Selected Causes of Death: Peoria County, 2002 & 2001

(Note: Categories reflect only selected causes of death thought to be of greatest public interest.)

<i>Cause</i>	<i>2002</i>	<i>2001</i>
<b>A. Major Cardiovascular Disease Deaths.....</b>	<b>767</b>	<b>641</b>
Diseases of the Heart.....	531	421
Primary Hypertension & Hypertensive		
Renal Disease .....	25	13
Cerebrovascular Disease .....	172	180
Atherosclerosis.....	9	12
Aortic Aneurysm & Dissection.....	17	11
Other Cardiovascular Diseases .....	13	4
<b>B. All Cancer Deaths .....</b>	<b>396</b>	<b>431</b>
Bronchus and Lung.....	122	125
Lip, Oral Cavity and Pharynx .....	10	4
Colorectal.....	53	45
Cervical.....	3	3
Prostate .....	18	23
Breast (female) .....	20	26
Leukemia .....	11	11
Skin.....	12	5
Other Cancer .....	147	189
<b>C. Other Selected Causes .....</b>	<b>343</b>	<b>375</b>
Anemias .....	2	3
Diabetes .....	53	49
Chronic Liver Disease and Cirrhosis.....	14	16
Nephritis, Nephrotic Syndrome and Nephrosis .....	34	30
Certain Conditions Originating in		
the Perinatal Period .....	12	7
Alzheimer's Disease .....	45	36
SIDS (Sudden Infant Death Syndrome) .....	1	7
Congenital Malformations .....	4	7

<i>Cause</i>	<i>2002</i>	<i>2001</i>
Peptic Ulcer.....	2	4
Other Causes.....	176	216
<b>D. All Respiratory Disease Deaths</b>		
<i>(excluding Lung Cancer) .....</i>	<b>166</b>	<b>160</b>
Influenza .....	0	0
Pneumonia .....	35	46
Chronic Lower Respiratory Diseases (C.L.R.D.) .....	114	89
Other Respiratory .....	17	25
<b>E. All External Causes of Death .....</b>	<b>91</b>	<b>98</b>
Motor Vehicle Accidents.....	12	23
Other Accidents .....	46	34
Suicide .....	21	17
Homicide .....	7	18
Undetermined Intent .....	0	4
Other External Causes.....	5	2
<b>F. All Infectious and Parasitic Disease Deaths .....</b>	<b>38</b>	<b>37</b>
Septicemia (Blood Infection).....	28	28
Tuberculosis .....	1	0
HIV Infection .....	2	5
Viral Hepatitis.....	0	1
Mycoses.....	1	0
Other Infectious and Parasitic Diseases.....	6	3
<b>G. All Peoria County Deaths .....</b>	<b>1,801</b>	<b>1,742</b>
<b>H. All Infant Deaths .....</b>	<b>21</b>	<b>19</b>
Under 28 Days.....	16	8
28 Days to 1 Year .....	5	11
(these deaths are included in appropriate categories of causation)		

## Peoria County Leading Causes of Mortality, All Races – 2002

Total Peoria County Deaths (All Causes): .....1,801

<i>Cause</i>	<i>Number of Deaths</i>	<i>Percent of Total</i>
1. Diseases of the Heart .....	531 .....	30%
2. Malignant Neoplasms (Cancer).....	396.....	22%
3. Coronary Heart Disease* .....	366.....	20%
4. Cerebrovascular Disease (Stroke).....	172.....	10%
5. Bronchus and Lung Cancer* .....	122.....	7%
6. Chronic Lower Respiratory Disease (C. L. R. D.) .....	114.....	6%
7. Accidents (including motor vehicle accidents).....	58.....	3%
8. Diabetes Mellitus .....	53.....	3%
9. Colorectal Cancer*.....	53.....	3%
10. Alzheimer’s Disease .....	45.....	3%
11. Pneumonia.....	35.....	2%
12. Nephritis, Nephrotic Syndrome, and Nephrosis.....	34.....	2%
13. Septicemia .....	28.....	2%
14. Suicide .....	21 .....	1%
15. Breast Cancer* (female) .....	20.....	1%

\* This is a subcategory of a preceding cause.

Source: IDPH

## Let Us Help You

The main offices of the Peoria City/County Health Department are located at 2116 N. Sheridan Road, Peoria, Illinois 61604. We also have a Satellite Site at Neighborhood House, located at 1020 S. Matthew Street, Peoria, Illinois 61605. This Services Directory has been developed to help you identify and use our various programs. Additional information on our services may be obtained by calling 679-6000 or any of the following direct lines.

Access to Care Programs.....	679-6601	Immunization Clinic.....	679-6659
Administration .....	679-6101	KidCare Health Insurance for Children.....	679-6601
Adult Health .....	679-6150	Neighborhood House Satellite Site.....	672-1288
AIDS Testing.....	679-6030	Nursing Administration .....	679-6012
Communicable Diseases.....	679-6022	Nursing Clinic .....	679-6050
Dental Clinic .....	679-6141	Septic System Information .....	679-6161
Environmental Health.....	679-6161	Smoking Cessation (Quit) Information & Classes .....	679-6131
Epidemiology .....	679-6635	Speakers Bureau/Media Contact.....	679-6131
Foreign Travel Immunizations .....	679-6056	Tuberculosis (TB) Clinic .....	679-6022
General Information .....	679-6000	Vital Records Program (Birth & Death Certificates) .....	679-6032
Healthy Lifestyles Clinic (STD).....	679-6030	Water Well Information .....	679-6161
Healthy Moms/Healthy Kids .....	679-6080	W.I.C. (Women, Infants & Children) Nutrition Program.....	679-6076
Health Promotion & Epidemiology .....	679-6131		
Hearing Impaired (TDD) .....	800/526-0844		
Help For Seniors .....	679-6042		

Offices are open Monday through Friday from 8:00 A.M. to 4:30 P.M. except holidays. Some clinics have extended hours. Call for additional information. The Peoria City/County Health Department is handicapped accessible. *The Peoria City/County Health Department is an equal opportunity provider.*

*This page (inside back cover) left intentionally blank.*



**Peoria City/County  
Health Department**

2116 N. Sheridan Rd. • Peoria, IL 61604